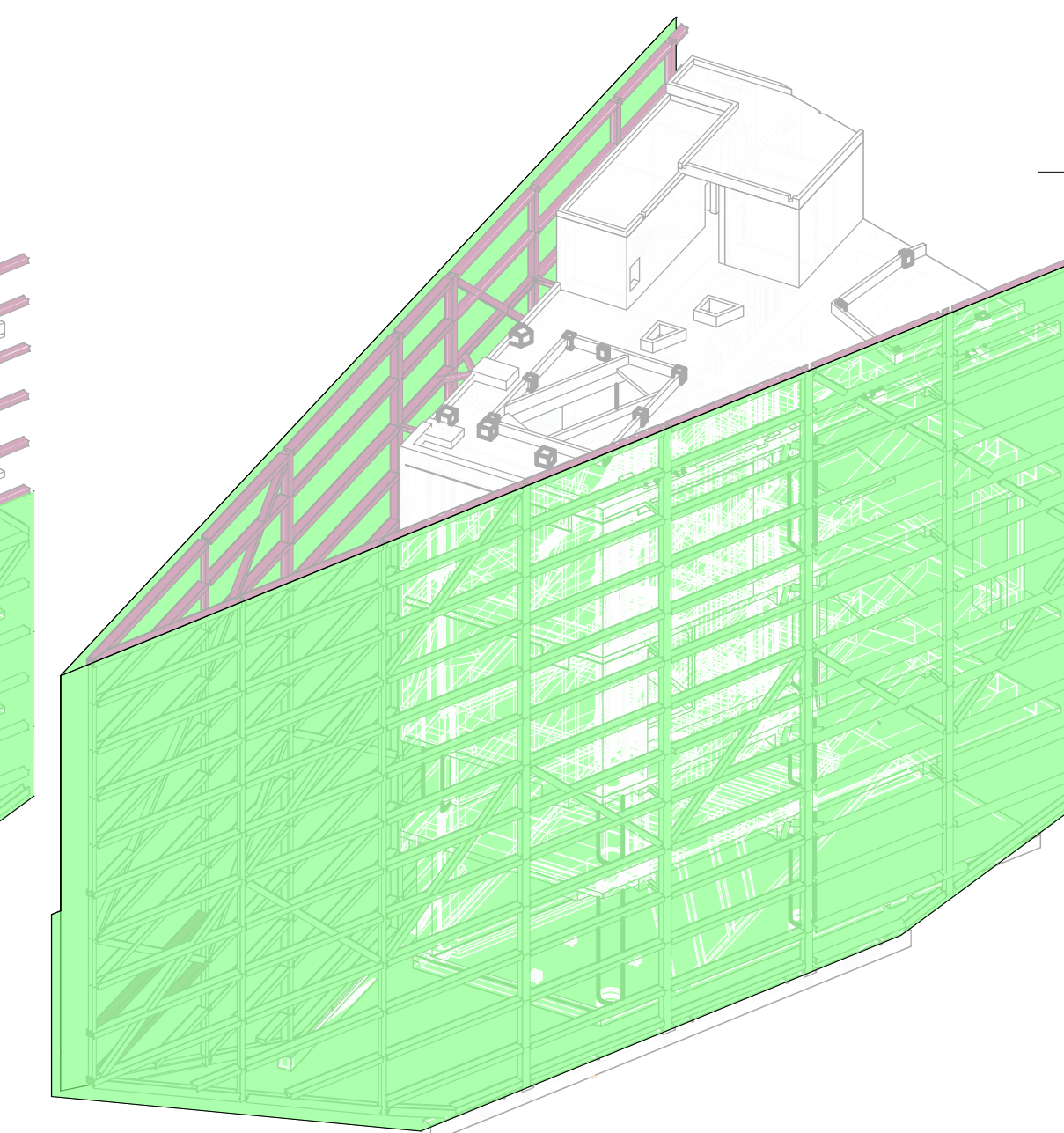


CONSTRUCTION SEQUENCE - 05

CONTINUE INSTALLING STEELWORK ENSURING STRUCTURE IS VERTICALLY AND Laterally PROPPED.




CONSTRUCTION SEQUENCE - 10

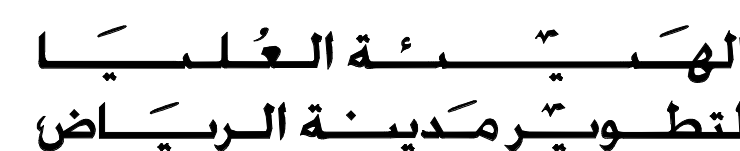
INSTALL CLADDING IN COMPLETE ROWS ON BOTH SIDES OF STRUCTURE SUCH THAT IT LOADS THE STRUCTURE EVENLY.

PROJECT

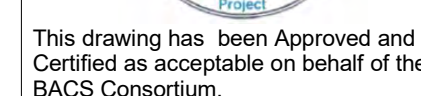
CLIENT



© 2015 H



© 2015 High Commission for the Development of ArRiyadh



This drawing has been Approved and
Certified as acceptable on behalf of the
BACS Consortium

J. BATCH

E. ALLSOP

J. BATCH

DRAWING NUMBER	REVISION
----------------	----------

M-BAR-1F41S0-CB00-EDR-204352	000
------------------------------	-----

[illegible]