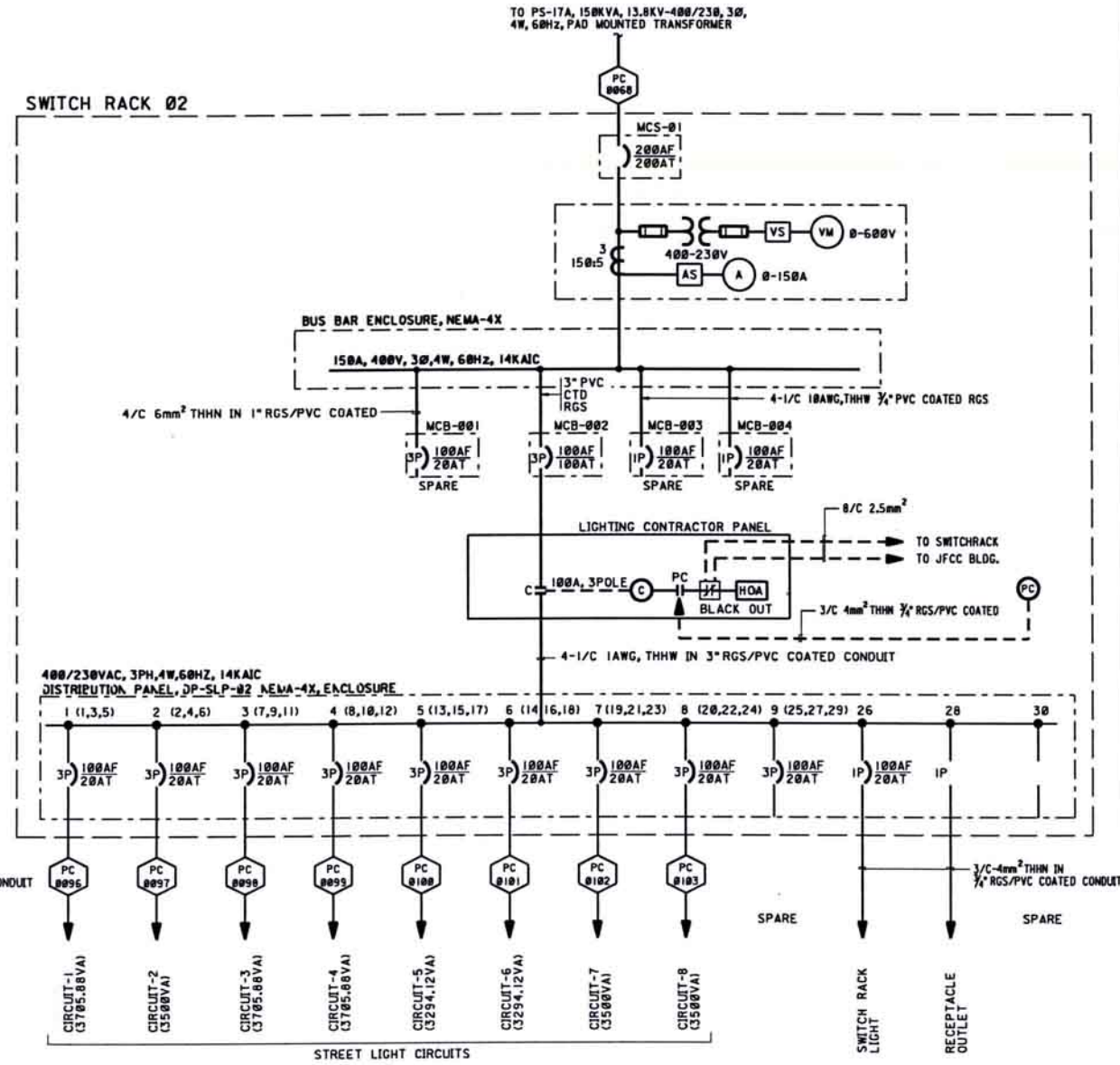


A ONE LINE DIAGRAM
KA-714489
SH 001

PANELBOARD NO. DP-SLP-01										PANELBOARD NO. DP-SLP-02									
LOCATION NEAR PS-16A					MOUNTING MAIN BREAKER VOLTAGE POWER SOURCE					LOCATION NEAR PS-17A					MOUNTING MAIN BREAKER VOLTAGE POWER SOURCE				
KAIC FEEDER SIZE 4-1/C-1AWG, THHW+1/C-25mm ² PVC, GND					SWITCHRACK LUGS ONLY 400/230VAC, 3PH, 4W, 60Hz PS-16A					SWITCHRACK LUGS ONLY 400/230VAC, 3PH, 4W, 60Hz PS-17A					SWITCHRACK LUGS ONLY 400/230VAC, 3PH, 4W, 60Hz PS-17A				
NEUTRAL GROUND TYPE BUS SIZE 100A					FULL TYPE NEMA-4X 100A					NEUTRAL GROUND TYPE BUS SIZE 100A					FULL TYPE NEMA-4X 100A				
CIRCUIT DESCRIPTION					CIRCUIT DESCRIPTION					CIRCUIT DESCRIPTION					CIRCUIT DESCRIPTION				
VA PER PHASE					VA PER PHASE					VA PER PHASE					VA PER PHASE				
A	B	C	MM ²	BREAKER	A	B	C	MM ²	BREAKER	A	B	C	MM ²	BREAKER	A	B	C	MM ²	BREAKER
1166.67	1166.67	1166.67	4x16	100 20 3	1	1166.67	1166.67	1166.67	4x16	100 20 3	1	1166.67	1166.67	1166.67	4x16	100 20 3	1	1166.67	1166.67
1166.67	1166.67	1166.67	4x16	100 20 3	3	1166.67	1166.67	1166.67	4x16	100 20 3	3	1166.67	1166.67	1166.67	4x16	100 20 3	3	1166.67	1166.67
1166.67	1166.67	1166.67	4x16	100 20 3	5	1166.67	1166.67	1166.67	4x16	100 20 3	5	1166.67	1166.67	1166.67	4x16	100 20 3	5	1166.67	1166.67
1235.29	1235.29	1235.29	4x16	100 20 3	7	1235.29	1235.29	1235.29	4x16	100 20 3	7	1235.29	1235.29	1235.29	4x16	100 20 3	7	1235.29	1235.29
1235.29	1235.29	1235.29	4x16	100 20 3	9	1235.29	1235.29	1235.29	4x16	100 20 3	9	1235.29	1235.29	1235.29	4x16	100 20 3	9	1235.29	1235.29
4804.01	4804.01	4804.01				5115.26	4735.29	4735.29				5046.67	4666.67	4666.67					
9919.3	9539.30	9539.30										9713.34	9335.34	9335.34					
DEMAND FACTOR: 100%					TOTAL DEMAND (VA) INCLUDING 20% SPARE = 34797.48 DEMAND CURRENT = 50.23 x 1.25 = 62.78 SELECTED CIRCUIT BREAKER = 100AT/100AF					DEMAND FACTOR: 100%					TOTAL DEMAND (VA) INCLUDING 20% SPARE = 34056.03 DEMAND CURRENT = 39.16 x 1.25 = 61.45A SELECTED CIRCUIT BREAKER = 100AT/100AF				

C PANEL SCHEDULE DP-SLP-01
KA-714489
SH 001



B ONE LINE DIAGRAM
KA-714489
SH 001

PANELBOARD NO. DP-SLP-01										PANELBOARD NO. DP-SLP-02									
LOCATION NEAR PS-16A					MOUNTING MAIN BREAKER VOLTAGE POWER SOURCE					LOCATION NEAR PS-17A					MOUNTING MAIN BREAKER VOLTAGE POWER SOURCE				
KAIC FEEDER SIZE 4-1/C-1AWG, THHW+1/C-25mm ² PVC, GND					SWITCHRACK LUGS ONLY 400/230VAC, 3PH, 4W, 60Hz PS-16A					SWITCHRACK LUGS ONLY 400/230VAC, 3PH, 4W, 60Hz PS-17A					SWITCHRACK LUGS ONLY 400/230VAC, 3PH, 4W, 60Hz PS-17A				
NEUTRAL GROUND TYPE BUS SIZE 100A					FULL TYPE NEMA-4X 100A					NEUTRAL GROUND TYPE BUS SIZE 100A					FULL TYPE NEMA-4X 100A				
CIRCUIT DESCRIPTION					CIRCUIT DESCRIPTION					CIRCUIT DESCRIPTION					CIRCUIT DESCRIPTION				
VA PER PHASE					VA PER PHASE					VA PER PHASE					VA PER PHASE				
A	B	C	MM ²	BREAKER	A	B	C	MM ²	BREAKER	A	B	C	MM ²	BREAKER	A	B	C	MM ²	BREAKER
1235.29	1235.29	1235.29	4x16	100 20 3	1	1235.29	1235.29	1235.29	4x16	100 20 3	1	1235.29	1235.29	1235.29	4x16	100 20 3	1	1235.29	1235.29
1166.67	1166.67	1166.67	4x16	100 20 3	3	1166.67	1166.67	1166.67	4x16	100 20 3	3	1166.67	1166.67	1166.67	4x16	100 20 3	3	1166.67	1166.67
1166.67	1166.67	1166.67	4x16	100 20 3	5	1166.67	1166.67	1166.67	4x16	100 20 3	5	1166.67	1166.67	1166.67	4x16	100 20 3	5	1166.67	1166.67
1098.04	1098.04	1098.04	4x16	100 20 3	7	1098.04	1098.04	1098.04	4x16	100 20 3	7	1098.04	1098.04	1098.04	4x16	100 20 3	7	1098.04	1098.04
1166.67	1166.67	1166.67	4x16	100 20 3	9	1166.67	1166.67	1166.67	4x16	100 20 3	9	1166.67	1166.67	1166.67	4x16	100 20 3	9	1166.67	1166.67
4666.67	4666.67	4666.67				5046.67	4666.67	4666.67				5046.67	4666.67	4666.67					
9713.34	9335.34	9335.34										9713.34	9335.34	9335.34					
DEMAND FACTOR: 100%					TOTAL DEMAND (VA) INCLUDING 20% SPARE = 34056.03 DEMAND CURRENT = 39.16 x 1.25 = 61.45A SELECTED CIRCUIT BREAKER = 100AT/100AF					DEMAND FACTOR: 100%					TOTAL DEMAND (VA) INCLUDING 20% SPARE = 34056.03 DEMAND CURRENT = 39.16 x 1.25 = 61.45A SELECTED CIRCUIT BREAKER = 100AT/100AF				

D PANEL SCHEDULE DP-SLP-02
KA-714489
SH 001

- NOTES:
- PANEL BOARD SHALL BE MANUFACTURE ACCORDING TO REQUIREMENT OF 16-SAMSS-518 AND SWITCH RACK ACCORDING TO 16-SAMSS-516.
 - CIRCUIT BREAKER USED FOR HIGH INTENSITY DISCHARGE CIRCUIT SHALL BE MARKED AS HD AND LISTED.
 - ALL CONDUIT WORK OF SWITCHRACKS TO BE PVC COATED RIGID STEEL.

LEGEND	
	PANEL WIRING IN RGS CONDUIT
	MOLDED CASE CIRCUIT BREAKER
	FUSE
	PHOTOCELL
	CURRENT TRANSFORMER
	VOLTAGE TRANSFORMER
	VOLTMETER
	AMPERMETER
	VOLTAGE SELECTOR SWITCH
	AMPERE SELECTOR SWITCH
	CONTACTOR COIL
	CONTACTOR CONTACT
	POWER CABLE
	HAND OFF AUTO SWITCH
	MOLDED CASE SWITCH
	MOLDED CASE CIRCUIT BREAKER

REFERENCE DRAWINGS	
DWG. CONTROL FOR	8.1.00026-001
STREET LIGHTING LAYOUT	KA-714489
CABLE AND CONDUIT SCHEDULE	VA-846494
ELECTRICAL DETAILS	VA-846492

Approved
20/04/14
Yusuf Attama

SCEC
SAUDI CONSOLIDATED
ENGINEERING CO.
LIC. NO. 323/1372/3

ISSUED FOR CONSTRUCTION
APR 2014

0 1.0 2.0 3.0 4.0 5.0
METERS
SCALE: 1:150M

REVISION VALIDATION			
THIS REVISION NO. 01 IS COVERED, FOR ALL APPROVAL AND CERTIFICATION REQUIREMENTS, PER SAEP-334, UNDER DRAWING COMPLETION CERTIFICATE NO. 10-00167-0007-001			
DESIGN CERTIFICATION	REVIEW FOR KEY DRAWINGS	OTHER	
DATE	DATE	DATE	DATE
08/04/14	08/04/14	08/04/14	08/04/14
01	01	01	01
STREET LIGHT WOODFORD			
THIS REVISION IS NOT TO BE USED FOR CONSTRUCTION UNLESS CERTIFIED AND DATED			
SAUDI ARABIAN OIL COMPANY			
ONE LINE & PANELBOARD SCHEDULE			
KAM ACCESS ROAD			
KAUST-PERIMETER SECURITY SYSTEM			
RABIGH SAUDI ARABIA			
PLANT NO.	ENGINEER	DRAWING NUMBER	REV. NO.
K55	P	KA-714489	001 OF 1

THIS IS A REDUCED PLOT
MULTIPLY ANY MEASUREMENT
BY 1.5
TO GET THE ACTUAL